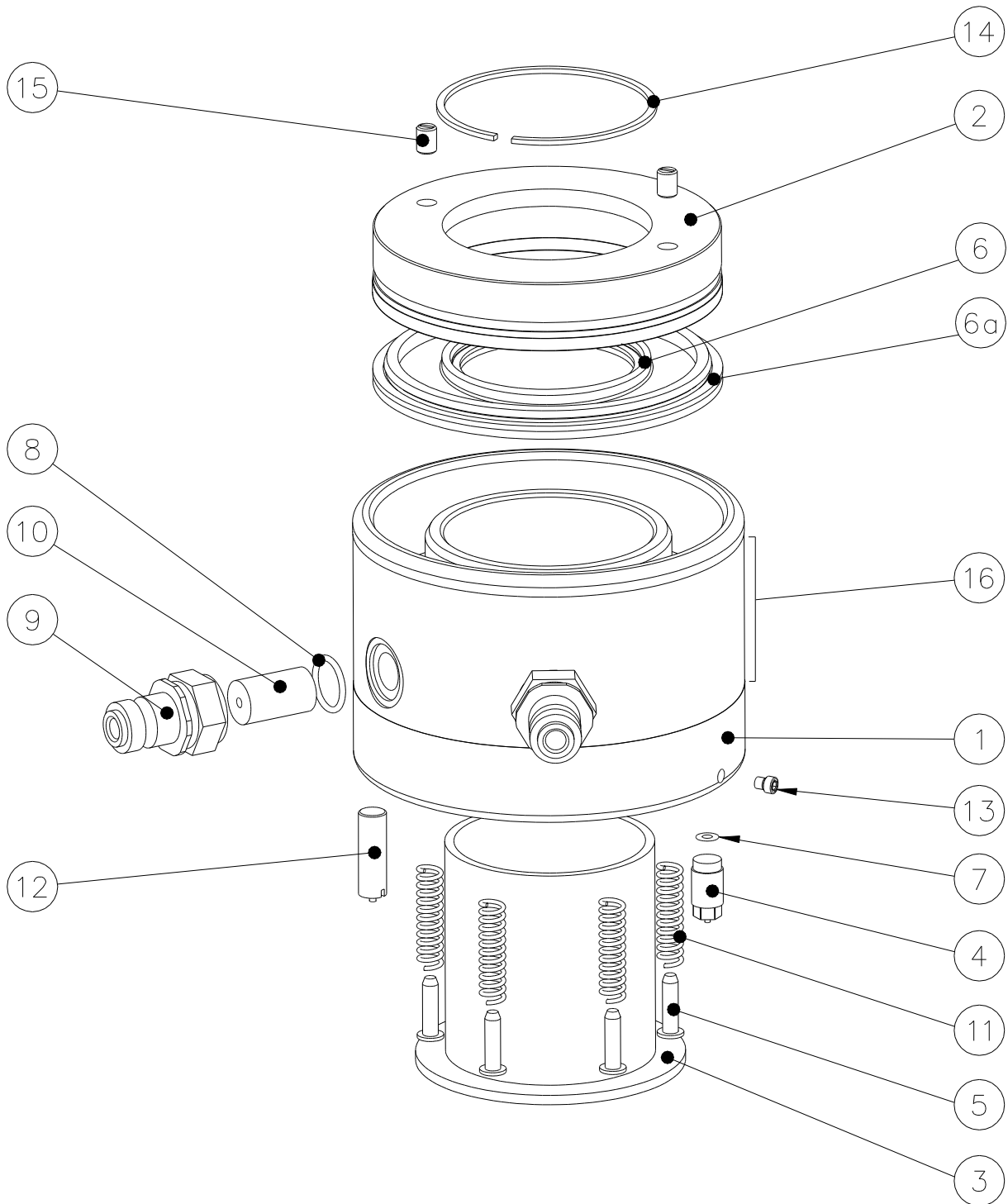


# SRT TENSIONER LOAD CELL PARTS LIST

(DUAL SEAL TYPE - SRT4,5,6,7,8)



**SRT TENSIONER LOAD CELL PARTS LIST**  
**(DUAL SEAL TYPE)**

**SRT LOAD CELL REF : SRT4**

ITEM	DESCRIPTION	QTY	PART CODE	
	<b>SRT4 LOAD CELL ASSEMBLY</b>	<b>1</b>	<b>SRTAS040001</b>	
1	SRT CYLINDER	1	SRTCY040001	
2	SRT PISTON	1	SRTPI040001	
3	SRT SLEEVE ASSEMBLY	1	SRTAS040003	
4	SRT RELIEF VALVE	1	SRTRV000001	‡
5	SPRING PIN	8	SRTSP000002	‡
6	SRT INNER SEAL SET	1	SRTSE040001	†
6a	SRT OUTER SEAL SET	1	SRTSE040002	†
7	SEAL	1	STDSE000001	‡
8	SEAL	2	STDSE000002	*
9	MALE COUPLING	2	STDHC000001	‡
10	ADAPTOR	2	STDHC000003	‡
11	SPRING	8	STDST000002	‡
12	SPRING PLUNGER	1	STDST000006	*
13	SCREW	2	STDFA000001	*
14	CLIP	1	STDRC000004	‡
15	SCREW	2	STDFA000003	*
16	ANTI-SLIP TAPE	1	SRTAT040001	

**SRT LOAD CELL REF : SRT5**

ITEM	DESCRIPTION	QTY	PART CODE	
	<b>SRT5 LOAD CELL ASSEMBLY</b>	<b>1</b>	<b>SRTAS050001</b>	
1	SRT CYLINDER	1	SRTCY050001	
2	SRT PISTON	1	SRTPI050001	
3	SRT SLEEVE ASSEMBLY	1	SRTAS050003	
4	SRT RELIEF VALVE	1	SRTRV000001	‡
5	SPRING PIN	12	SRTSP000002	‡
6	SRT INNER SEAL SET	1	SRTSE050001	†
6a	SRT OUTER SEAL SET	1	SRTSE050002	†
7	SEAL	1	STDSE000001	‡
8	SEAL	2	STDSE000002	*
9	MALE COUPLING	2	STDHC000001	‡
10	ADAPTOR	2	STDHC000003	‡
11	SPRING	12	STDST000002	‡
12	SPRING PLUNGER	1	STDST000006	*
13	SCREW	2	STDFA000001	*
14	CLIP	1	STDRC000006	‡
15	SCREW	2	STDFA000005	*
16	ANTI-SLIP TAPE	1	SRTAT050001	

**SRT TENSIONER LOAD CELL PARTS LIST**  
**(DUAL SEAL TYPE)**

**SRT LOAD CELL REF : SRT6**

ITEM	DESCRIPTION	QTY	PART CODE
	<b>SRT6 LOAD CELL ASSEMBLY</b>	<b>1</b>	<b>SRTAS060001</b>
1	SRT CYLINDER	1	SRTCY060001
2	SRT PISTON	1	SRTPI060001
3	SRT SLEEVE ASSEMBLY	1	SRTAS060003
4	SRT RELIEF VALVE	1	SRTRV000001
5	SPRING PIN	18	SRTSP000002
6	SRT INNER SEAL SET	1	SRTSE060001
6a	SRT OUTER SEAL SET	1	SRTSE060002
7	SEAL	1	STDSE000001
8	SEAL	2	STDSE000002
9	MALE COUPLING	2	STDHC000001
10	ADAPTOR	2	STDHC000003
11	SPRING	18	STDST000002
12	SPRING PLUNGER	1	STDST000006
13	SCREW	2	STDFA000001
14	CLIP	1	STDRC000008
15	SCREW	2	STDFA000005
16	ANTI-SLIP TAPE	1	SRTAT060001

‡  
‡  
†  
†  
‡  
\*  
‡  
‡  
‡  
\*  
\*  
‡  
\*

**SRT LOAD CELL REF : SRT7**

ITEM	DESCRIPTION	QTY	PART CODE
	<b>SRT7 LOAD CELL ASSEMBLY</b>	<b>1</b>	<b>SRTAS070001</b>
1	SRT CYLINDER	1	SRTCY070001
2	SRT PISTON	1	SRTPI070001
3	SRT SLEEVE ASSEMBLY	1	SRTAS070003
4	SRT RELIEF VALVE	1	SRTRV000001
5	SPRING PIN	25	SRTSP000002
6	SRT INNER SEAL SET	1	SRTSE070001
6a	SRT OUTER SEAL SET	1	SRTSE070002
7	SEAL	1	STDSE000001
8	SEAL	2	STDSE000002
9	MALE COUPLING	2	STDHC000001
10	ADAPTOR	2	STDHC000003
11	SPRING	25	STDST000002
12	SPRING PLUNGER	1	STDST000006
13	SCREW	2	STDFA000001
14	CLIP	1	STDRC000047
15	SCREW	2	STDFA000005
16	ANTI-SLIP TAPE	1	SRTAT070001

‡  
‡  
†  
†  
‡  
\*  
‡  
‡  
‡  
\*  
\*  
‡  
\*

**SRT TENSIONER LOAD CELL PARTS LIST**  
**(DUAL SEAL TYPE)**

**SRT LOAD CELL REF : SRT8**

ITEM	DESCRIPTION	QTY	PART CODE	
	<b>SRT8 LOAD CELL ASSEMBLY</b>	<b>1</b>	<b>SRTAS080001</b>	
1	SRT CYLINDER	1	SRTCY080001	
2	SRT PISTON	1	SRTPI080001	
3	SRT SLEEVE ASSEMBLY	1	SRTAS080003	
4	SRT RELIEF VALVE	1	SRTRV000001	‡
5	SPRING PIN	32	SRTSP000002	‡
6	SRT INNER SEAL SET	1	SRTSE080001	†
6a	SRT OUTER SEAL SET	1	SRTSE080002	†
7	SEAL	1	STDSE000001	‡
8	SEAL	2	STDSE000002	*
9	MALE COUPLING	2	STDHC000001	‡
10	ADAPTOR	2	STDHC000003	‡
11	SPRING	32	STDST000002	‡
12	SPRING PLUNGER	1	STDST000006	*
13	SCREW	2	STDFA000001	*
14	CLIP	1	STDRC000048	‡
15	SCREW	2	STDFA000005	*
16	ANTI-SLIP TAPE	1	SRTAT080001	

† - Part subject to wear, replace as required.

‡ - Standard spare part, replace if damaged / unserviceable.

\* - Contained within Standard Service Kit:

SRT1, 2, 3 Service Kit - SRTSK010001

SRT4, 5, 6 Service Kit - SRTSK020001