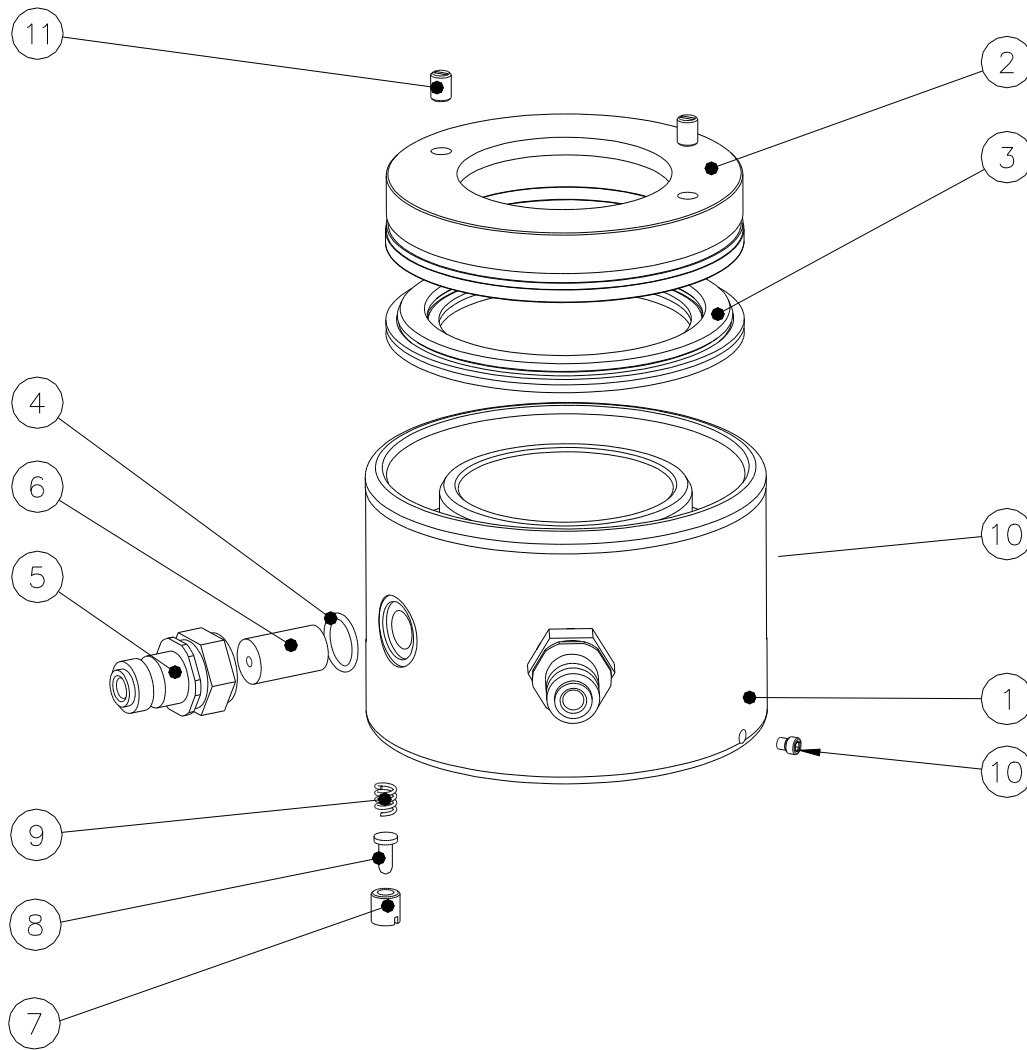


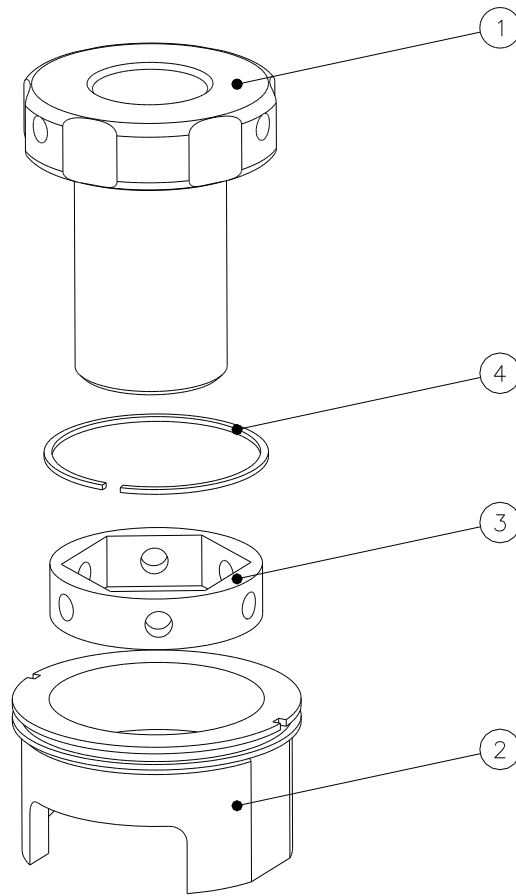
**SRT0 TENSIONER LOAD CELL PARTS LIST**  
**(SINGLE SEAL TYPE)**



**SRT LOAD CELL REF : SRT0**

ITEM	DESCRIPTION	QTY	PART CODE
	<b>SRT0 LOAD CELL ASSEMBLY</b>	<b>1</b>	<b>SRTAS000001</b>
1	SRT CYLINDER	1	SRTCY000001
2	SRT PISTON	1	SRTPI000001
3	SRT SEAL SET	1	SRTSE000001
4	SEAL	2	STDSE000002
5	MALE COUPLING	2	STDHC000001
6	ADAPTOR	2	STDHC000003
7	SPRING PLUNGER CAP	1	MRTPC010001
8	SPRING PLUNGER PIN	1	MRTPP010001
9	SPRING	1	STDST000099
10	SCREW	2	STDFA000001
11	SCREW	2	STDFA000003

**SRT TENSIONER ADAPTOR KIT PARTS LIST**  
**(INCH SERIES)**



***SRT ADAPTOR KIT REF : SRT0 3/4"***

ITEM	DESCRIPTION	QTY	PART CODE
	<b>SRT0 3/4" ADAPTOR KIT</b>	<b>1</b>	<b>SRTAS000002</b>
1	SRT PULLER SLEEVE (3/4" - 10UN)	1	SRTPS00UC00
	<b>SRT0 3/4" BRIDGE ASSEMBLY</b>	<b>1</b>	<b>SRTAS000003</b>
2	SRT BRIDGE	1	SRTBR00UC01
3	HEX ROTATING DISC	1	INTNR00UC01
4	CLIP	1	STDRC000058

***SRT ADAPTOR KIT REF : SRT0 7/8"***

ITEM	DESCRIPTION	QTY	PART CODE
	<b>SRT0 7/8" ADAPTOR KIT</b>	<b>1</b>	<b>SRTAS000004</b>
1	SRT PULLER SLEEVE (7/8" - 9UN)	1	SRTPS00UD00
	<b>SRT0 7/8" BRIDGE ASSEMBLY</b>	<b>1</b>	<b>SRTAS000005</b>
2	SRT BRIDGE	1	SRTBR00UC01
3	HEX ROTATING DISC	1	INTNR00UD01
4	CLIP	1	STDRC000058

**SRT TENSIONER ADAPTOR KIT PARTS LIST**  
**(METRIC SERIES)**

***SRT ADAPTOR KIT REF : SRT0 M20***

ITEM	DESCRIPTION	QTY	PART CODE
	<b>SRT0 M20 ADAPTOR KIT</b>	<b>1</b>	<b>SRTAS000006</b>
1	SRT PULLER SLEEVE (M20 x 2.5)	1	SRTPS00ME00
	<b>SRT0 M20 BRIDGE ASSEMBLY</b>	<b>1</b>	<b>SRTAS000007</b>
2	SRT BRIDGE	1	SRTBR00UC01
3	HEX ROTATING DISC	1	INTNR00ME01
4	CLIP	1	STDRC000058

***SRT ADAPTOR KIT REF : SRT0 M22***

ITEM	DESCRIPTION	QTY	PART CODE
	<b>SRT0 M22 ADAPTOR KIT</b>	<b>1</b>	<b>SRTAS000010</b>
1	SRT PULLER SLEEVE (M22 x 2.5)	1	SRTPS00MF00
	<b>SRT0 ¾" BRIDGE ASSEMBLY</b>	<b>1</b>	<b>SRTAS000003</b>
2	SRT BRIDGE	1	SRTBR00UC01
3	HEX ROTATING DISC	1	INTNR00UC01
4	CLIP	1	STDRC000058